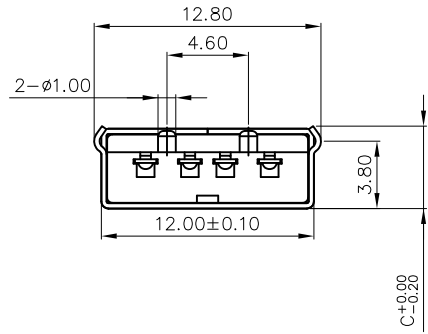
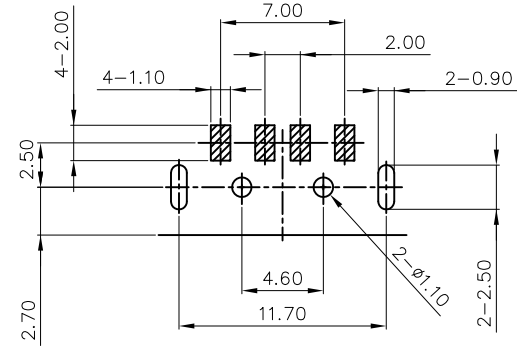
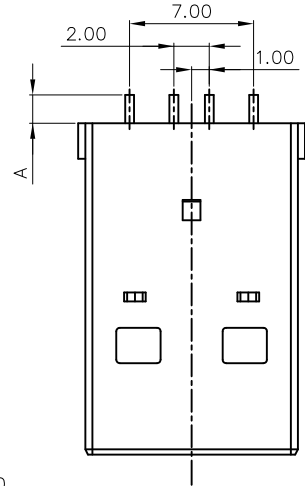
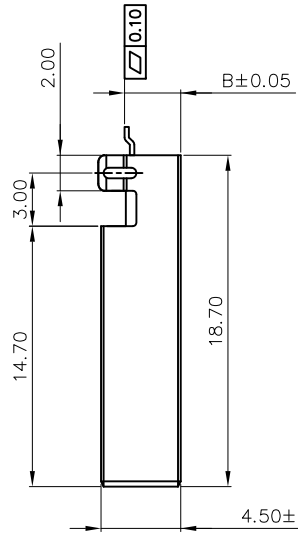


REV.	MARK	ECN NO.	MODIFY DES.	DR.	DATE
A			THE FIRST RELEASE	Peter chen	2006/12/19
B			ADD PAGE 2	Ivy Hsu	2007/07/23
1.0	△		REVISE DIM.	Ivy Hsu	2007/09/20
1.1	△	ECN07101101	ADD P/N	Ivy Hsu	2007/10/11
1.2	△	ECN07110501	REVISE DIM.	Ivy Hsu	2007/11/05
1.3	△	ECN08030401	REVISE DIM.	Lung	2008/03/04



- NOTES:
- MATERIAL:
SHELL: STAINLESS STEEL THICKNESS 0.3mm
HOUSING: ENGINEERING THERMOPLASTIC WITH 30% GLASS FIBER FILLED, UL 94V-0 RATED
CONTACT: BRASS THICKNESS 0.20 mm
 - PLATING:
SHELL: 120u" MINIMUM NICKEL
CONTACT: UNDER PLATED 50u" MINIMUM NICKEL OVER ALL, 120u" MINIMUM TIN ON SOLDERING AREA, SELECTIVE GOLD PLATED ON CONTACT AREA
 - RATING
VOLTAGE RATING: 250V AC
CURRENT RATING: 1.5A MAX.
 - ELECTRICAL CHARACTERISTICS:
CONTACT RESISTANCE: 30m ohms MIN.
DIELECTRIC WITHSTANDING VOLTAGE: 500V DC FOR 1 MINUTE
 - COPLANARITY IS 0.10 MM MAX.
 - PART NUMBER:



USB PLUG
BORAD MOUNT NORMAL TYPE K

RECOMMENDED PCB LAYOUT
ALL TOLERANCES ARE ±0.05

20020-XXATGXXXX

GOLD PLATING & PACKING:

- 0: 30u" GOLD, TRAY
- 1: 30u" GOLD, TAPE & REEL
- 2: 15u" GOLD, TAPE
- 3: 15u" GOLD, TAPE & REEL
- 4: 10u" GOLD, TRAY
- 5: 10u" GOLD, TAPE & REEL

MOUNTING TYPE:

- 0: BOARD MOUNT NORMAL TYPE
- 1: BOARD MOUNT SINKING TYPE

METAL PEG LOCKING TYPE

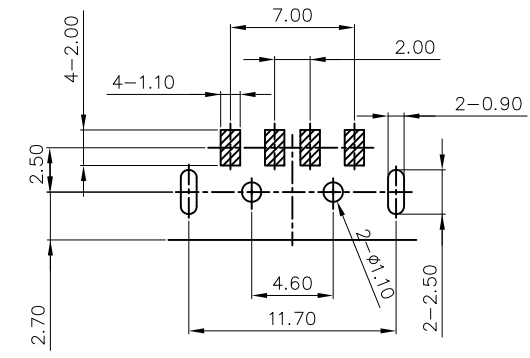
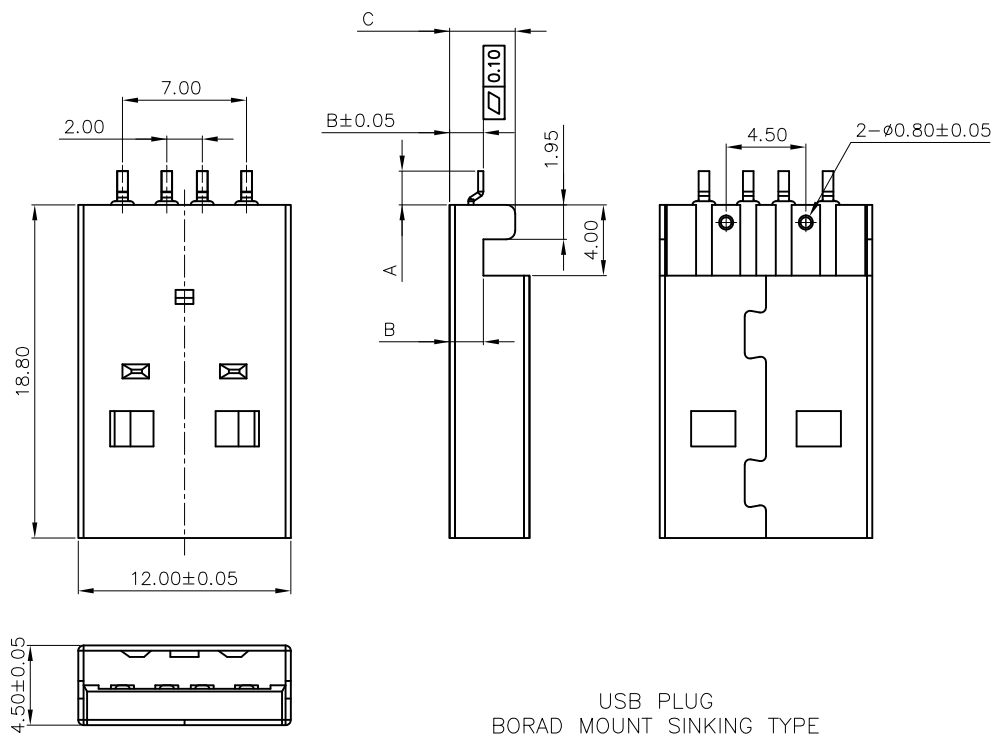
CODE	TYPE	DIM		
		A	B	C
30	TYPE D	1.90	1.90	3.70
10	TYPE K	1.60	3.17	4.72
40	TYPE H	1.90	1.90	3.70
		2.30	1.90	3.10
50	TYPE F	1.90	1.90	4.40
60	TYPE G	1.90	1.90	4.40
70	TYPE S	1.40	1.90	4.50

METAL PEG CONSTRUCTION OPTION:

- 10: STRAIGHT PEG
- A2: KINK PEG

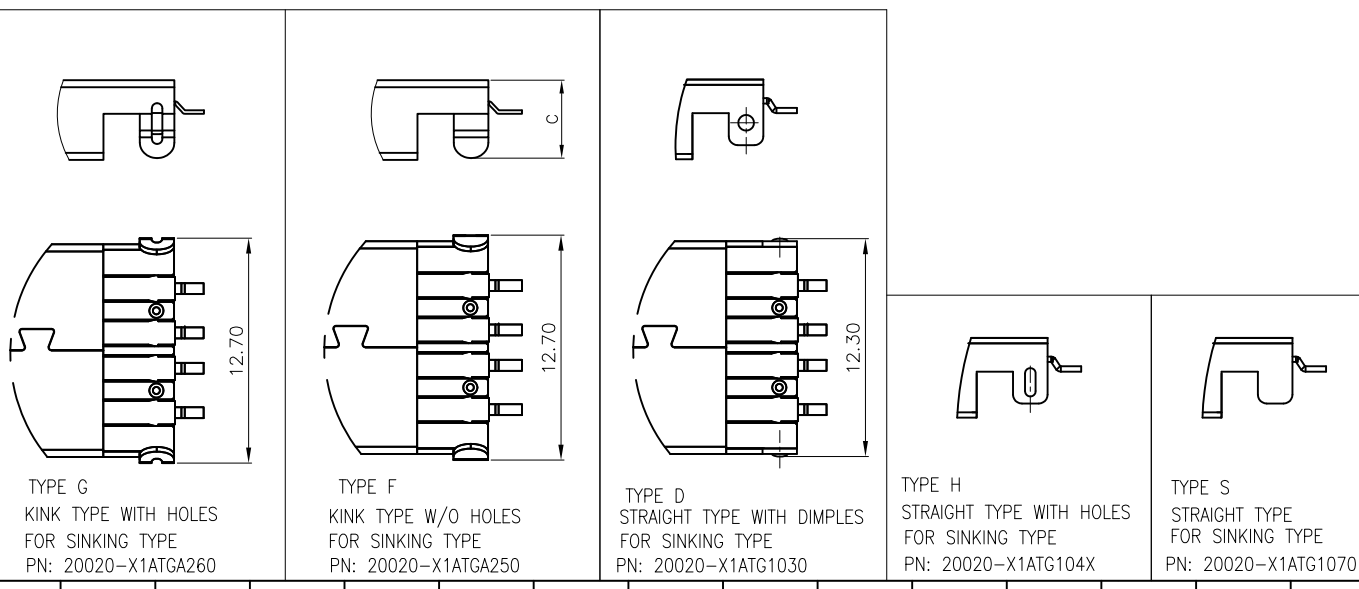
APPROVAL			
DWG NO. 20012-ATG010	ATERGI TECHNOLOGY CO., LTD.		
P/N SEE NOTE6	APPD: Lung	TITLE: USB PLUG	
DRAFT WHERE APPLICABLE MUST REMAIN WITHIN DIMENSIONS TOLERANCES	CHKD:	RIGHT ANGLE BOARD MOUNT SMT WITH PLASTIC POSTS	
X. ± 0.20	X' ± 1"	DR: Ivy Hsu	SCALE: 1 : 1
.X ± 0.15	.X' ± 0.5"	UNITS: mm	
.XX ± 0.10	.XX' ± 0.1"	REV. 1.3	SHEET: 1 OF 2
.XXX ±	.XXX' ±		DATE: 12/19/2006

REV.	MARK	ECN NO.	MODIFY DES.	DR.	DATE
A			THE FIRST RELEASE	Peter chen	2006/12/19
B			ADD PAGE 2	Ivy Hsu	2007/07/23
1.0	△		REVISE DIM.	Ivy Hsu	2007/09/20
1.1	△	ECN07101101	ADD P/N	Ivy Hsu	2007/10/11
1.2	△	ECN07110501	REVISE DIM.	Ivy Hsu	2007/11/05
1.3	△	ECN08030401	REVISE DIM.	Ivy Hsu	2008/03/04



RECOMMENDED PCB LAYOUT
ALL TOLERANCES ARE ±0.05

USB PLUG
BORAD MOUNT SINKING TYPE



TYPE G
KINK TYPE WITH HOLES
FOR SINKING TYPE
PN: 20020-X1ATGA260

TYPE F
KINK TYPE W/O HOLES
FOR SINKING TYPE
PN: 20020-X1ATGA250

TYPE D
STRAIGHT TYPE WITH DIMPLES
FOR SINKING TYPE
PN: 20020-X1ATG1030

TYPE H
STRAIGHT TYPE WITH HOLES
FOR SINKING TYPE
PN: 20020-X1ATG104X

TYPE S
STRAIGHT TYPE
FOR SINKING TYPE
PN: 20020-X1ATG1070

DWG NO. 20012-ATG010		ATERGI TECHNOLOGY CO., LTD.	
P/N SEE NOTE 6		APPD: Lung	TITLE: USB PLUG
DRAFT WHERE APPLICABLE MUST REMAIN WITHIN DIMENSIONS TOLERANCES		CHKD:	RIGHT ANGLE BOARD MOUNT SMT WITH PLASTIC POSTS
X. ± 0.20	X' ± 1"	DR: Ivy Hsu	SCALE: 1 : 1
.X ± 0.15	.X' ± 0.5"		UNITS: mm
.XX ± 0.10	.XX' ± 0.1"	REV. 1.3	SHEET: 2 OF 2
.XXX ±	.XXX' ±		DATE: 12/19/2006

APPROVAL