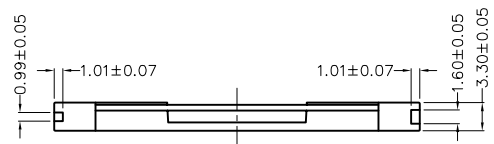
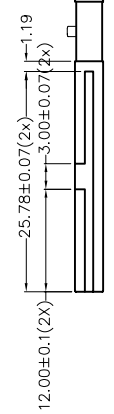
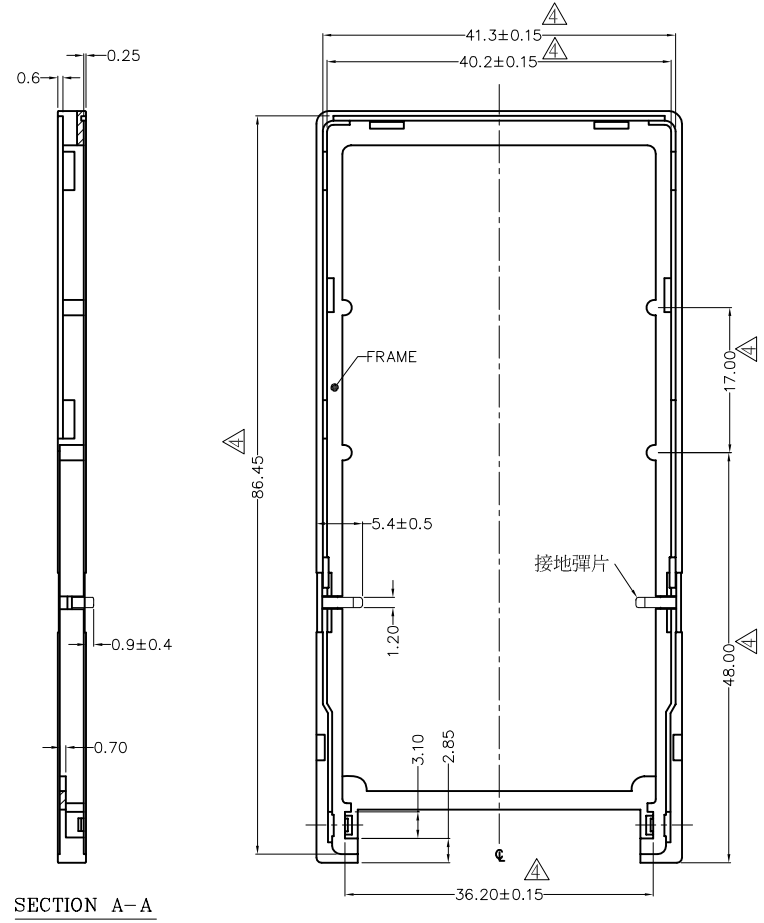
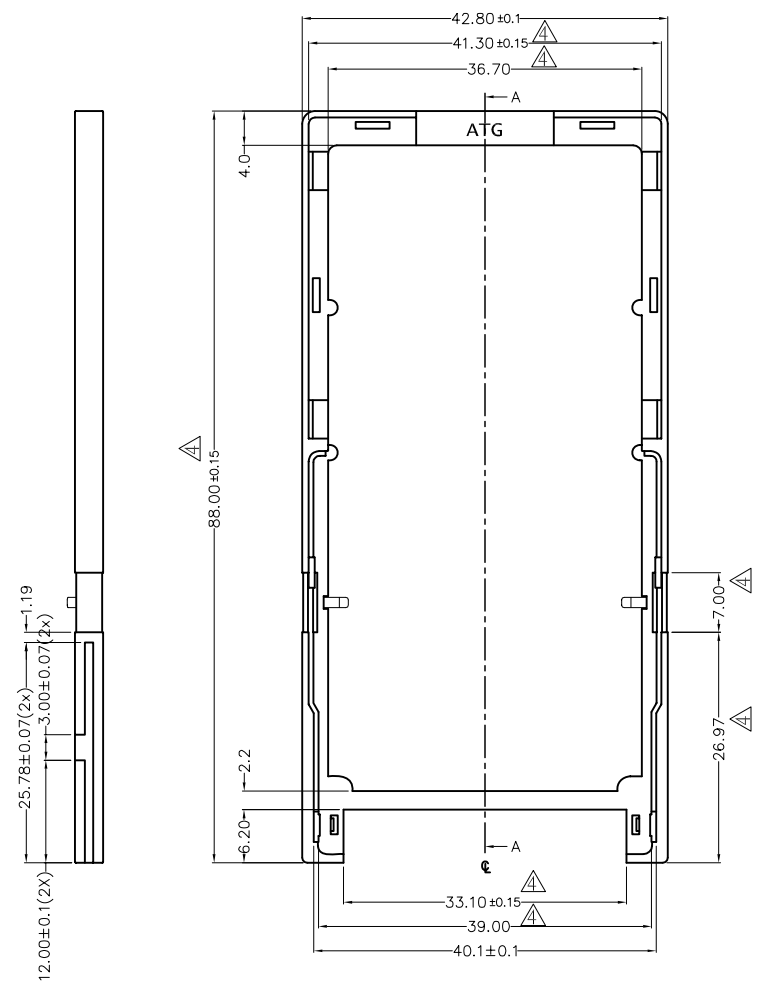
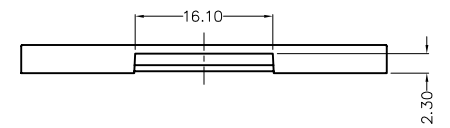


REV.	MARK	ECN NO.	MODIFY DES.	DR.	DATE
1.0		1st. Release		WEN.Y.H	01/14/02
1.1		ECN03122501	增加顏色	FANG	12/25/03
1.2		ECN04052501	增加ABS材質	H.J.LIN	05/25/04
1.3		ECN04061601	增加PC材質	N.L.SU	06/16/04
1.4		ECN05070501	修改尺寸	LUNG	07/05/05



△TABLE I

12910-02ATG1060	PANTONE NO. 2955C	PC UL 94V-0	DWG NO. 12998-ATG040	ATERGI TECHNOLOGY CO., LTD.	
12910-02ATG1050	PANTONE NO. 2955C	ABS UL 94V-0	P/N SEE TABLE I	APPD: Lung	TITLE: C/F EXTENDED CARD FRAME ASSEMBLY
12910-02ATG1040	PANTONE NO. 2955C	PBT+30%G.F UL 94V-0	DRAFT WHERE APPLICABLE MUST REMAIN WITHIN DIMENSIONS TOLERANCES	CHKD:	
12910-02ATG1030	BLACK	PBT+30%G.F UL 94V-0	X.* ±	X.* ±	DR: LUNG
P/N	COLOR	MATERIAL	.X ± 0.25	.X* ± 10*	SCALE: 1 : 1
			.XX ± 0.15	.XX* ± 5*	UNITS: mm
			.XXX ± 0.05	.XXX* ± 1*	REV. 1.4
					SHEET: 1 OF 1
					DATE: 01,14,2002